

ALPHA

CUSTOM YACHTS



AWARD-WINNING, WORLD-RENOUNDED AND CUSTOM-BUILT

ALPHA CUSTOM YACHTS

The detail and innovation found in each Alpha Custom Yacht is truly an experience to behold. Built by yacht lovers for yacht lovers, family-owned Alpha Custom Yacht has surpassed the limitations of traditional yacht design and forged a previously inconceivable standard of design and engineering for yachts from the 30-meter size range.



JORGE AND ROBERTO ABOUMRAD

Challenge the limitations of traditional yacht standards, designing each of the vessels in the Alpha Custom Yacht's collection to accommodate family togetherness and maximize comfort.

A L P H A
CUSTOM YACHTS



THE BEGINNING

Over three decades ago, they started in the industry by establishing Performance Boats, now Mexico's biggest boat dealer. But, they noticed their perfect yacht do not existed so they decided to create it themselves. Inspired by real yacht owner's needs, they went beyond conventional design, setting a new standard in yacht engineering for 30-meter yachts.

A L P H A
CUSTOM YACHTS



YACHTS



SQUALO 88



SQUALO 100



SQUALO 125



ALFRESCO 125



ALFRESCO 125 OPEN GALLEY



SPRITZ 102



SPRITZ 116



SPRITZ 140

SPRITZ

140

























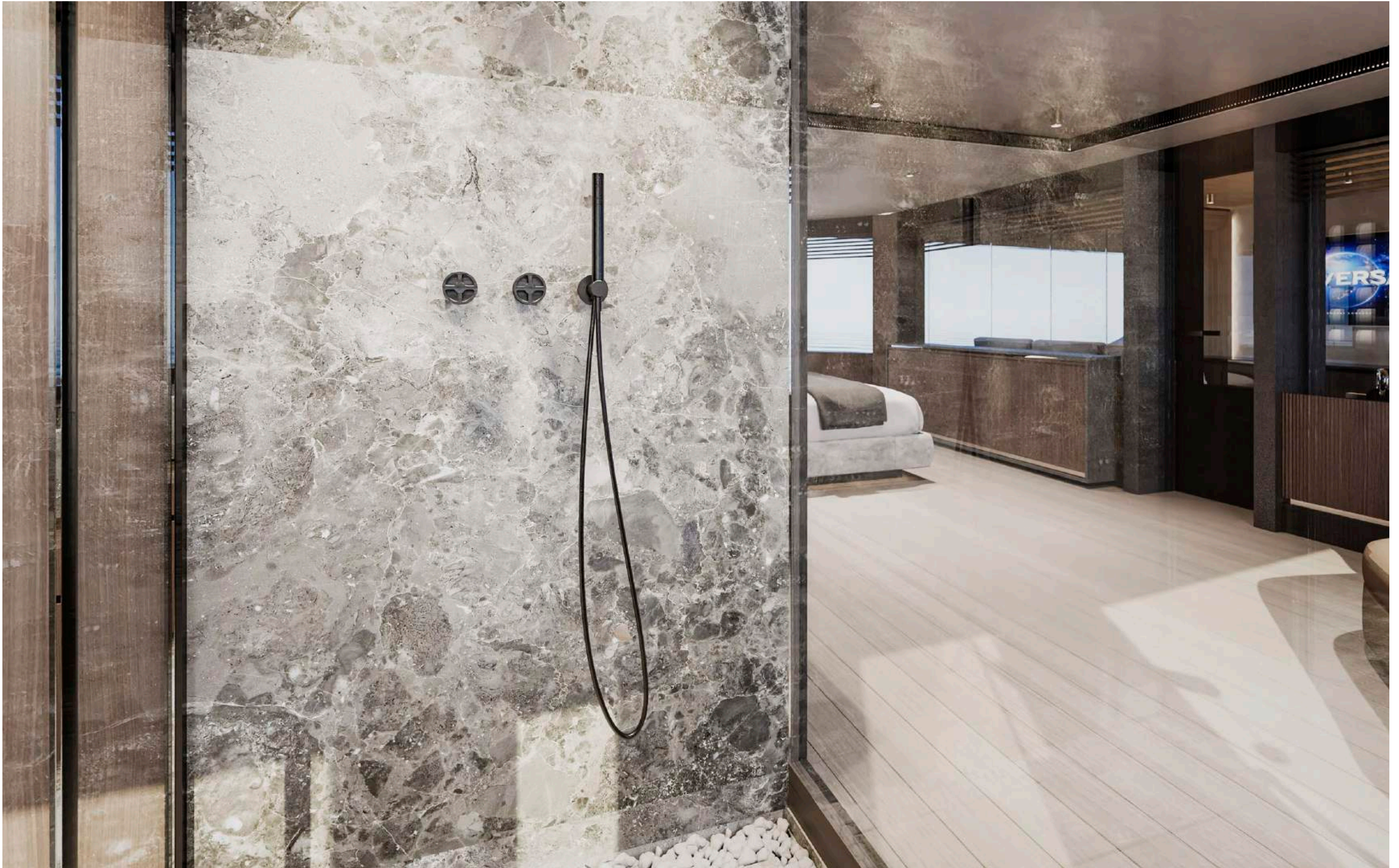
















































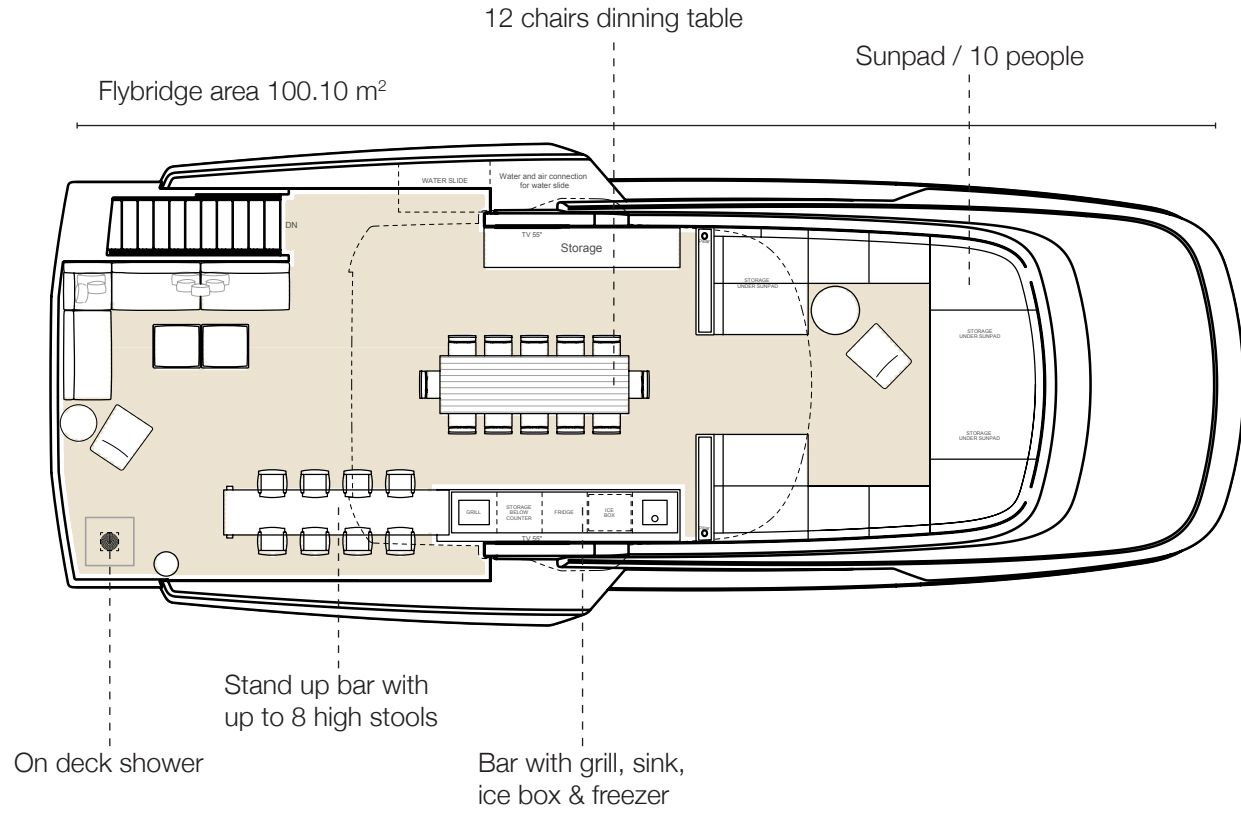


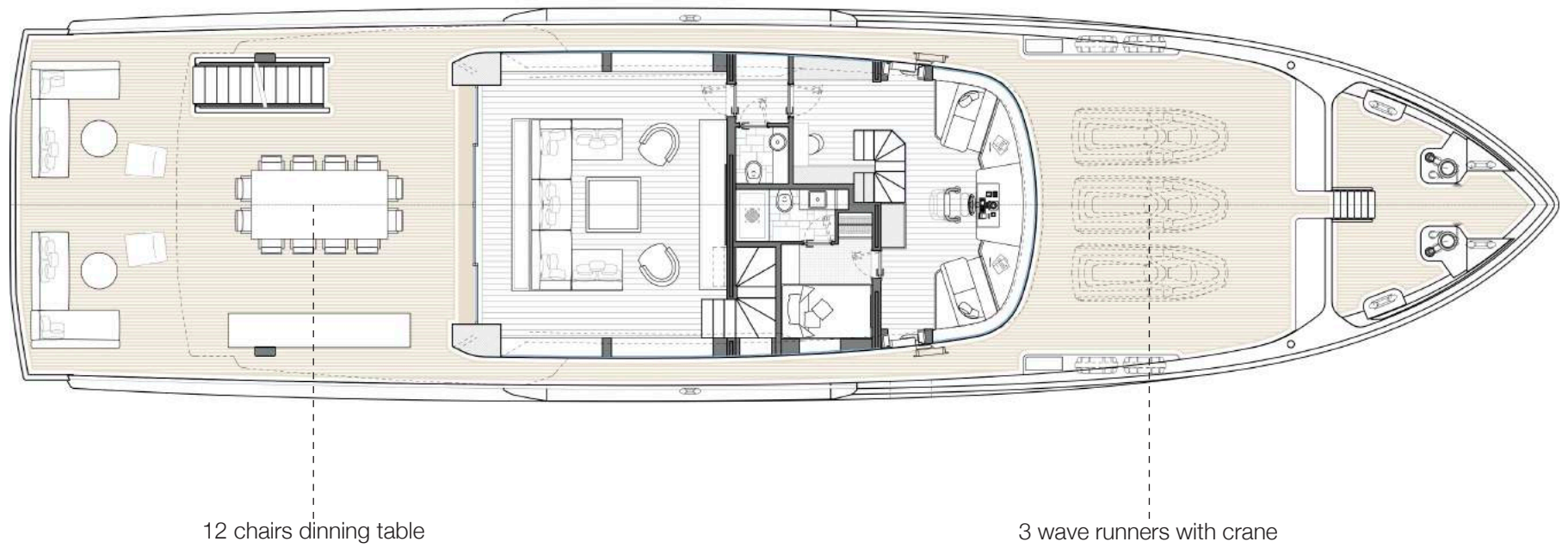


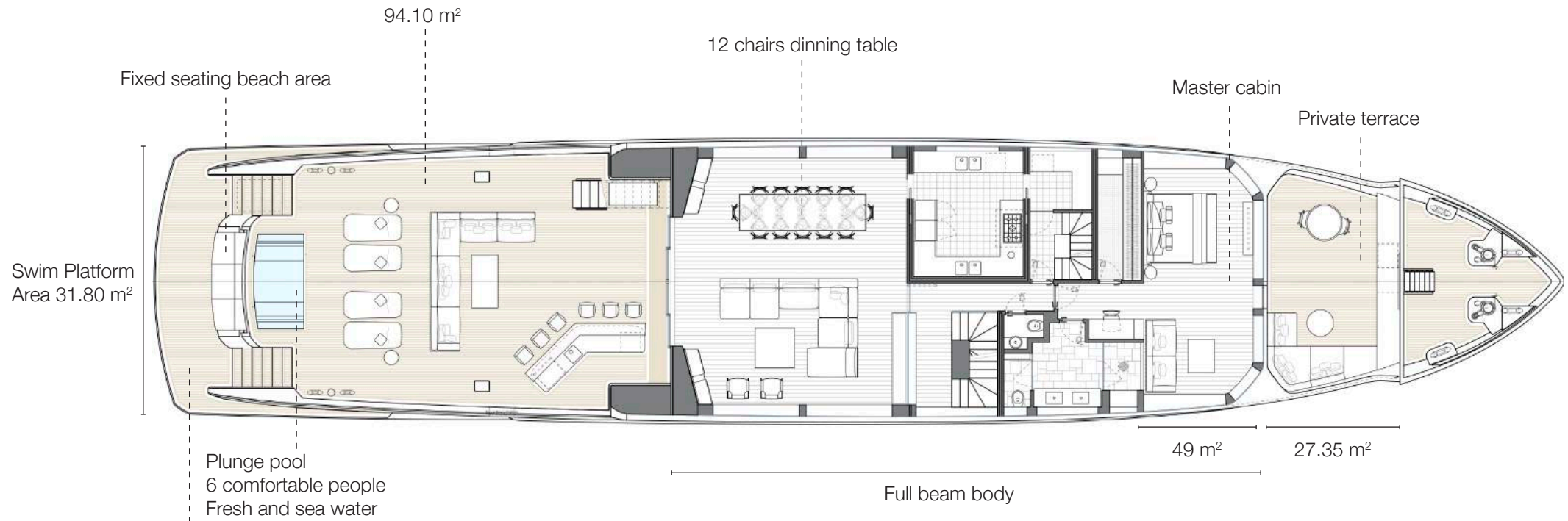




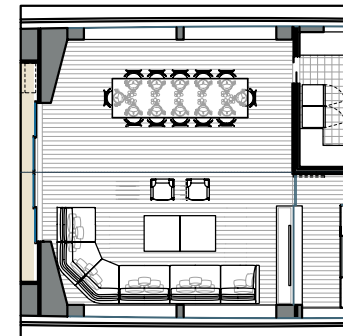




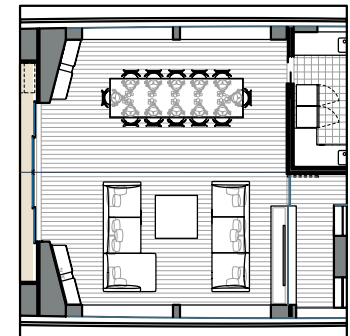




Main Deck Lounge Opt. B



Main Deck Lounge Opt. C





Lenght Overall:	42.6 m	140'
Length Waterline:	40.45 m	132' 8"
Max Beam:	8.65 m	28' 4"
Draft at Full Load:	2.25 m	7' 4"
Displacement at Full Load:	About 330 tons	727,525 lbs
Gross Tons:	About 415 GT	
Fuel:	43,500 liters approx	11,491 U.S. Gallons
Water:	7,500 liters approx	1,981 U.S. Gallons
Waste Water:	5,500 liters approx	1,452 U.S. Gallons
Owner & Guests Accommodation:	12 persons in 6 cabins and 6 bathrooms + dayhead	
Crew Accommodation:	11 persons in 6 cabins and 6 bathrooms	
Exterior Design:	Giorgio M. Cassetta Design	
Interior Design:	Giorgio M. Cassetta Design	
Interior Decoration:	Paola Aboumrad	
Naval Architect:	Laurent Giles Naval Architects	
Engineering:	Shipyard / Laurent Giles Naval Architects	
Building Material:	Aluminum Hull and Superstructure	

Range

Economical Speed (10knots):	3,300 nautical miles
-----------------------------	----------------------

Propulsion Details

Engine Options	Max Speed	Cruising Speed	Economical Speed
Max Speed (with MAN V12 1.650 hp):	16.5 kn	15 kn	10 kn

www.alphayachts.com

Miami, Florida
1441 Brickell Avenue, Suite 1400
33131, Miami Florida, Estados Unidos.

contact@alphayachts.com