

# ALPHA

CUSTOM YACHTS



AWARD-WINNING, WORLD-RENOWNED AND CUSTOM-BUILT

# ALPHA CUSTOM YACHTS

The detail and innovation found in each Alpha Custom Yacht is truly an experience to behold. Built by yacht lovers for yacht lovers, family-owned Alpha Custom Yacht has surpassed the limitations of traditional yacht design and forged a previously inconceivable standard of design and engineering for yachts from the 30-meter size range.



# JORGE AND ROBERTO ABOUMRAD

Challenge the limitations of traditional yacht standards, designing each of the vessels in the Alpha Custom Yacht's collection to accommodate family togetherness and maximize comfort.

**A L P H A**  
CUSTOM YACHTS



## THE BEGINNING

Over three decades ago, they started in the industry by establishing Performance Boats, now Mexico's biggest boat dealer. But, they noticed their perfect yacht do not existed so they decided to create it themselves. Inspired by real yacht owner's needs, they went beyond conventional design, setting a new standard in yacht engineering for 30-meter yachts.

**A L P H A**  
CUSTOM YACHTS



# YACHTS



SQUALO 88



SQUALO 100



SQUALO 125



ALFRESCO 125



ALFRESCO 125 OPEN GALLEY



SPRITZ 102



SPRITZ 116



SPRITZ 140

SQUALO  
100

























































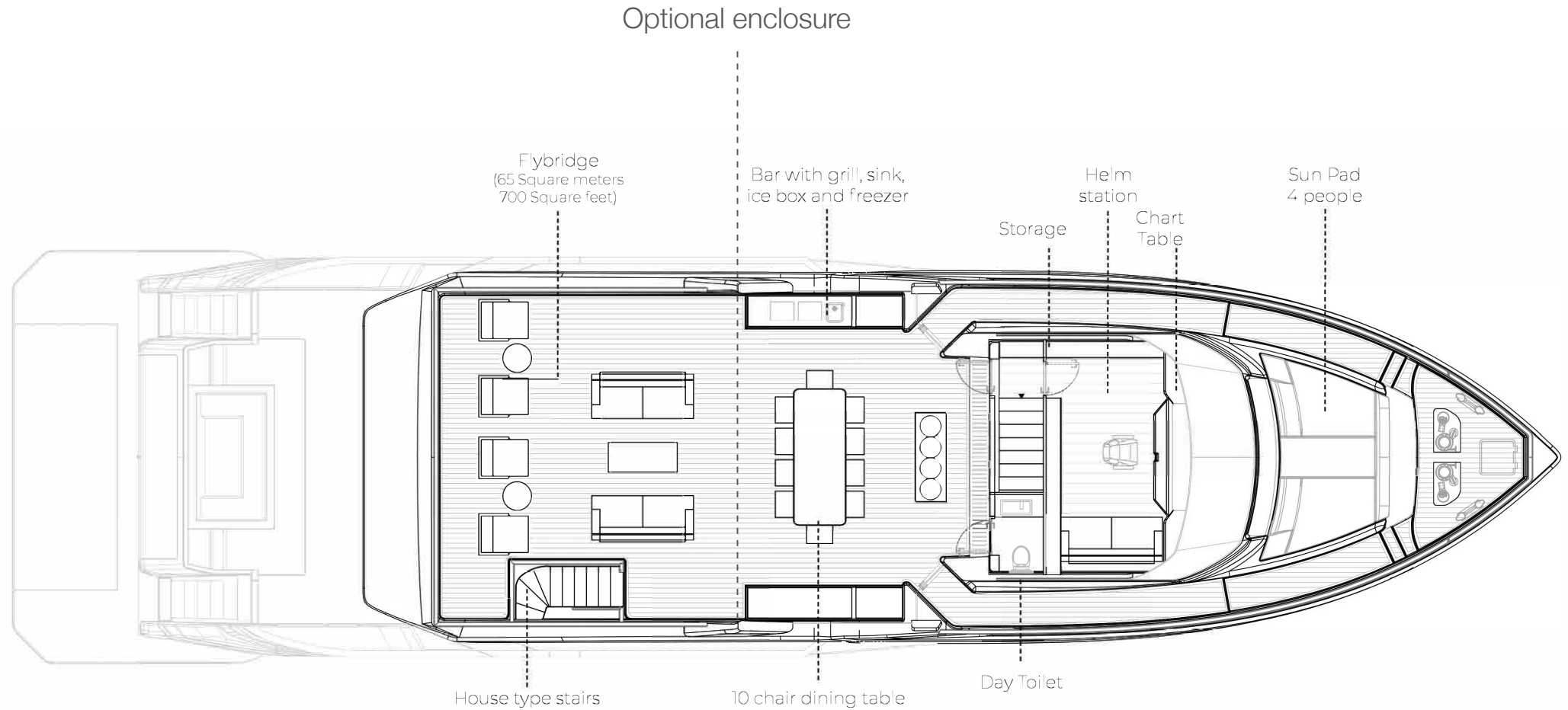


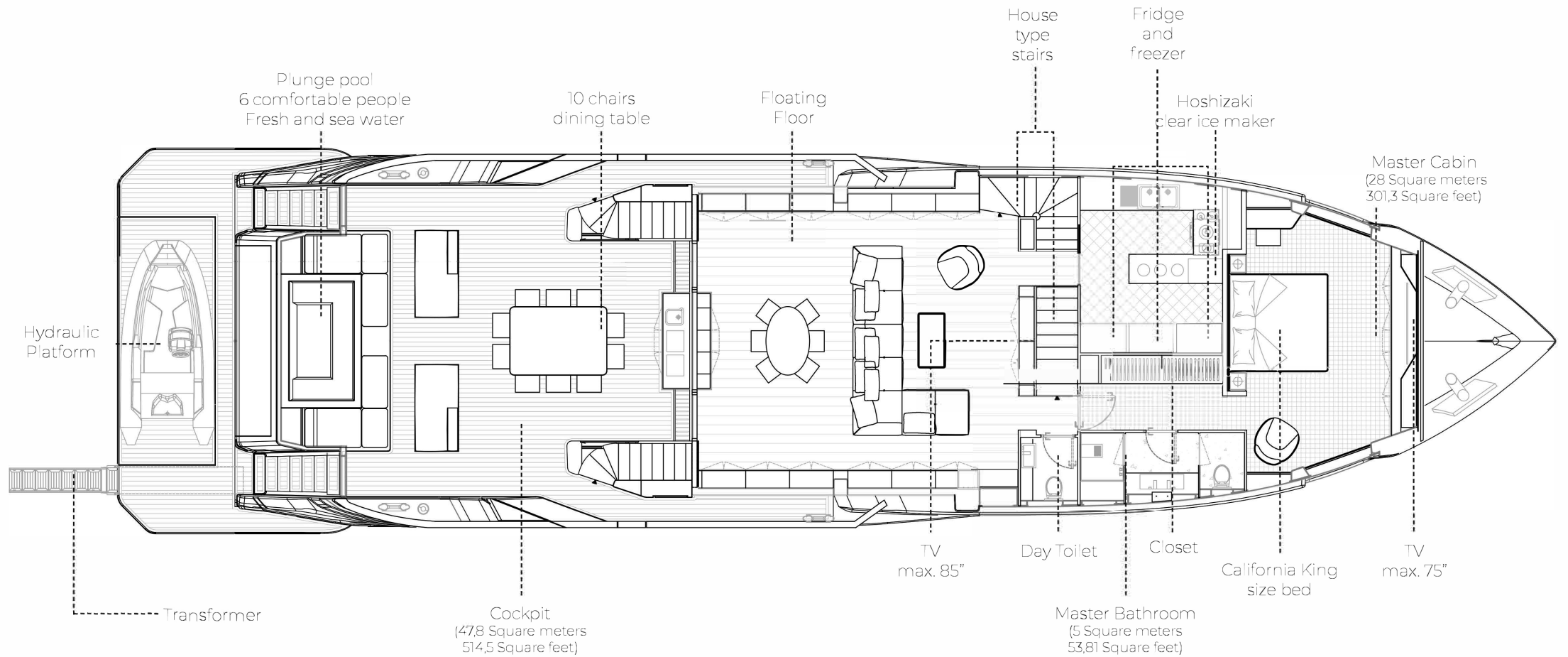


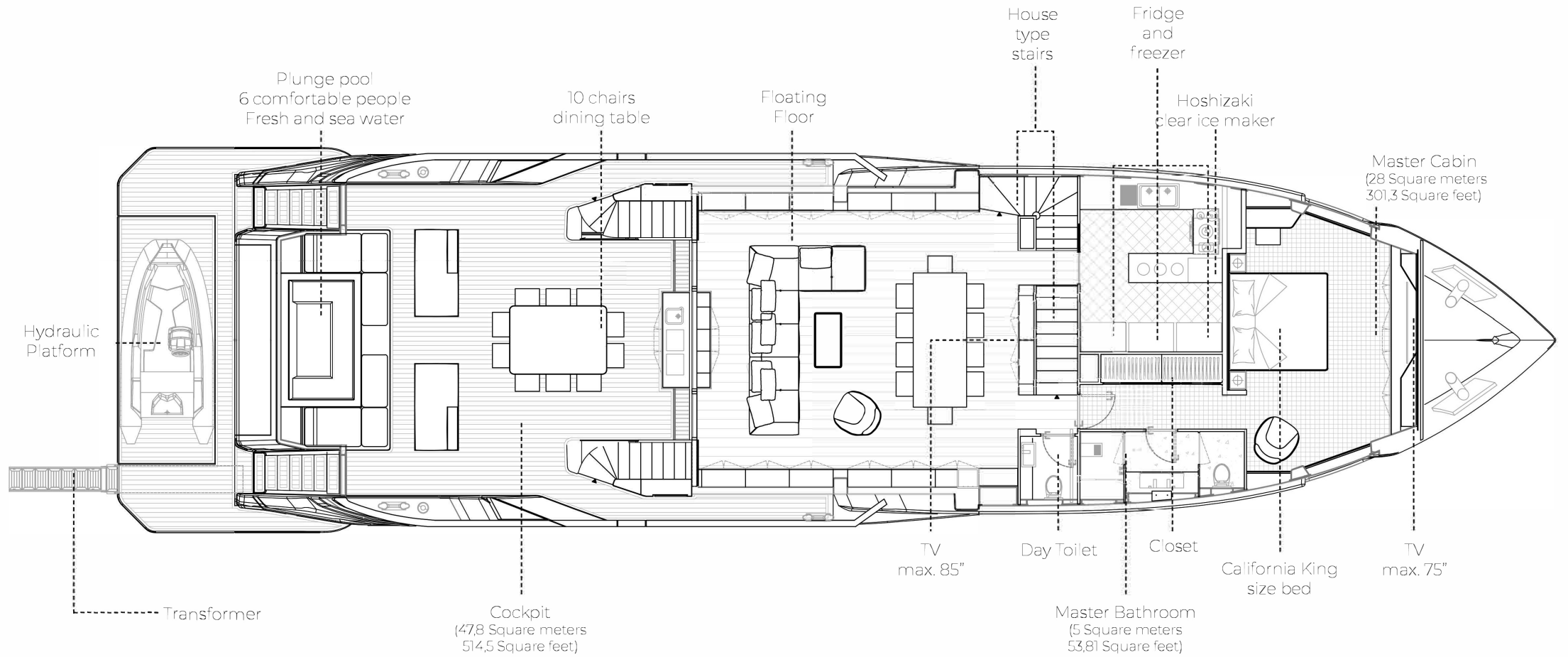


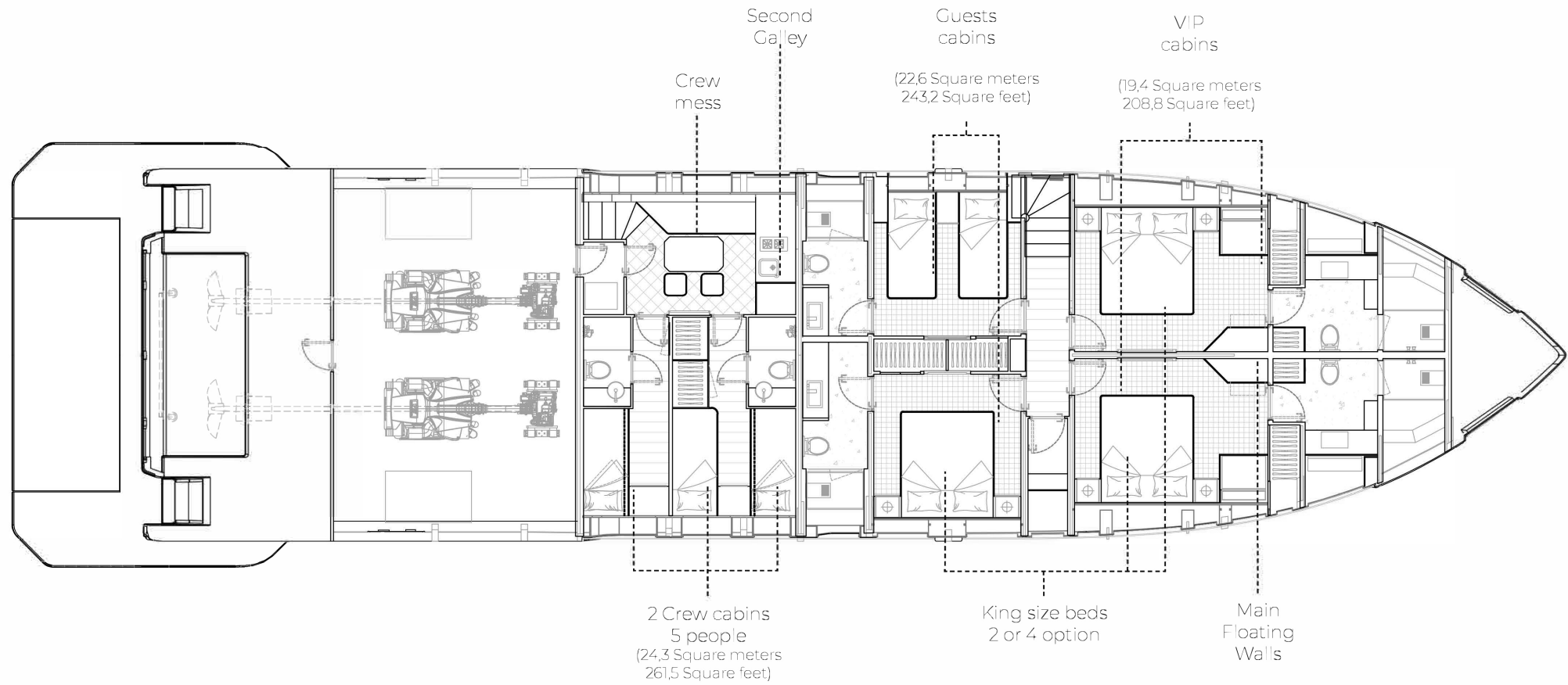












Lenght Overall:	30.02 m	98' 6"
Length Waterline:	26.08 m	85' 6"
Max Beam:	7.92 m	25' 11"
Draft at Full Load:	1.79 m	5' 10"
Displacement at Full Load:	127 Tons	279,987 lbs
Gross Tons with Enclosure:	206 GT	
Gross Tons without Enclosure:	196 GT	
Fuel:	14,500 litres	3,830 U.S. Gallons
Water:	3,700 litres	977 U.S. Gallons
Waste Water:	2,600 litres	686 U.S. Gallons
Urea (with SCR only):	1,100 litres	290 U.S. Gallons
Owner & Guests Accommodation:	10 persons in 5 cabins and 5 bathrooms + 2 day heads	
Crew Accommodation:	5 persons in 2 cabins and 2 bathrooms	
Exterior Design:	Roberto Curto	
Interior Design:	Roberto Curto	
Naval Architecture:	Massimo Verme	
Engineering:	Massimo Verme	

Range

Economical Speed (9.5 knots):	1,400 nautical miles
-------------------------------	----------------------

Propulsion Details

Engine Options	Max Speed	Cruising Speed
MAN V-8 1000 HP:	15 kn	13.5 kn
MAN V-8 1300 HP:	16.5 kn	15.5 kn



[www.alphayachts.com](http://www.alphayachts.com)

Miami, Florida  
1441 Brickell Avenue, Suite 1400  
33131, Miami Florida, Estados Unidos.

[contact@alphayachts.com](mailto:contact@alphayachts.com)