

ALPHA

CUSTOM YACHTS



AWARD-WINNING, WORLD-RENOWNED AND CUSTOM-BUILT

ALPHA CUSTOM YACHTS

The detail and innovation found in each Alpha Custom Yacht is truly an experience to behold. Built by yacht lovers for yacht lovers, family-owned Alpha Custom Yacht has surpassed the limitations of traditional yacht design and forged a previously inconceivable standard of design and engineering for yachts from the 30-meter size range.



JORGE AND ROBERTO ABOUMRAD

Challenge the limitations of traditional yacht standards, designing each of the vessels in the Alpha Custom Yacht's collection to accommodate family togetherness and maximize comfort.

A L P H A
CUSTOM YACHTS



THE BEGINNING

Over three decades ago, they started in the industry by establishing Performance Boats, now Mexico's biggest boat dealer. But, they noticed their perfect yacht do not existed so they decided to create it themselves. Inspired by real yacht owner's needs, they went beyond conventional design, setting a new standard in yacht engineering for 30-meter yachts.

A L P H A
CUSTOM YACHTS



YACHTS



SQUALO 88



SQUALO 100



SQUALO 125



ALFRESCO 125



ALFRESCO 125 OPEN GALLEY



SPRITZ 102



SPRITZ 116



SPRITZ 140

ALFRESCO

125













OPEN
GALLEY
Decor Option A









OPEN
GALLEY
Decor Option B



















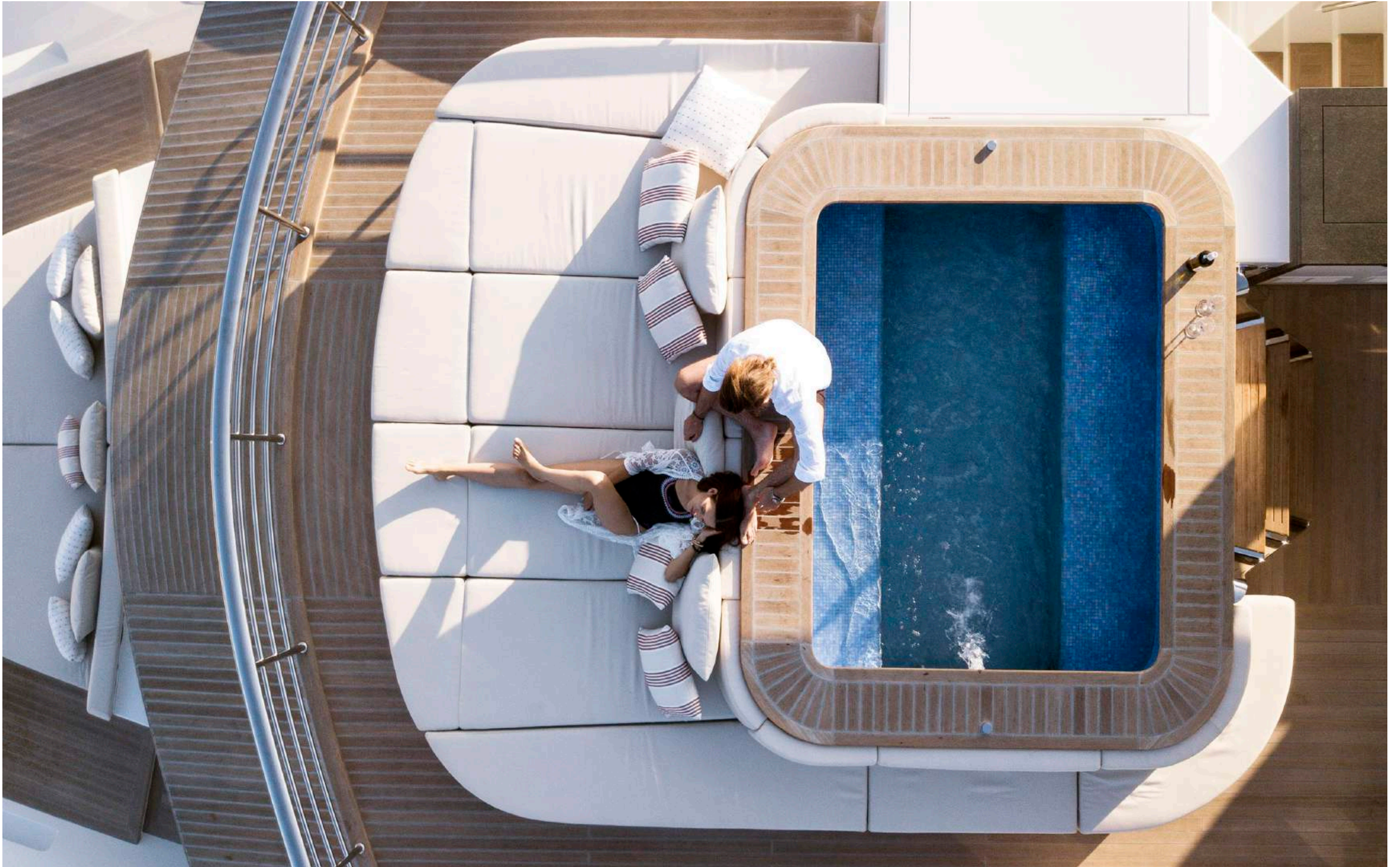






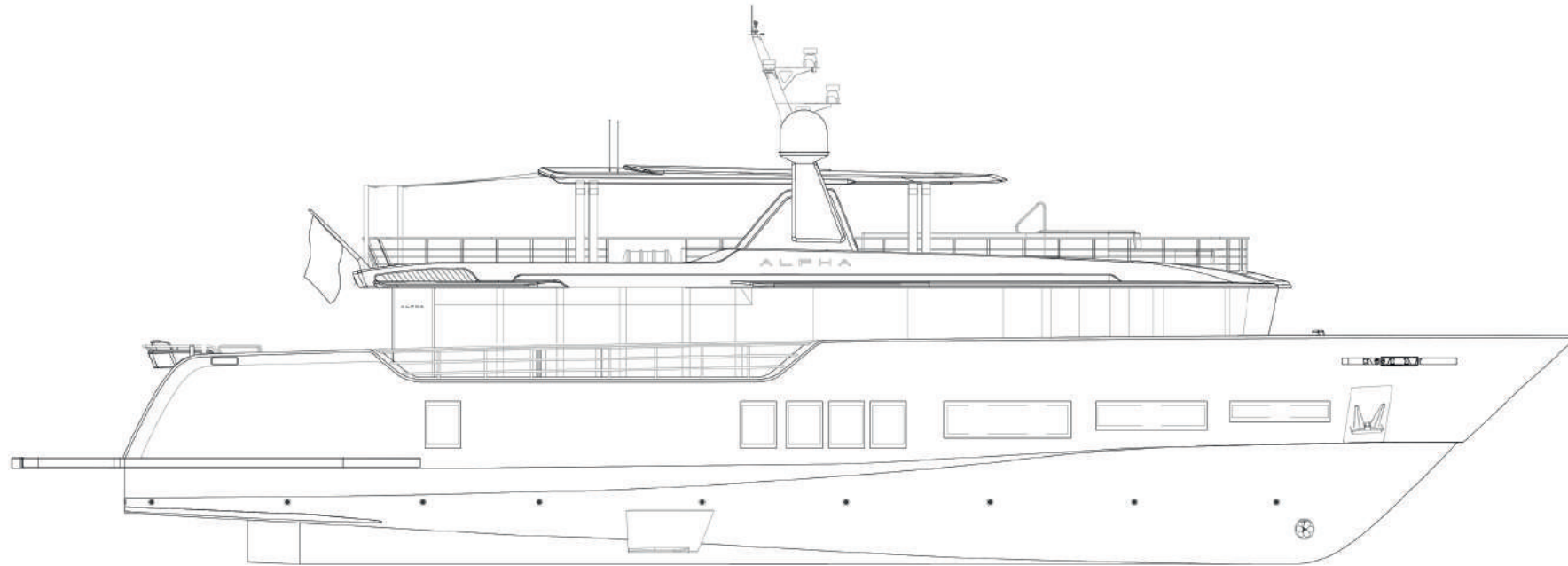


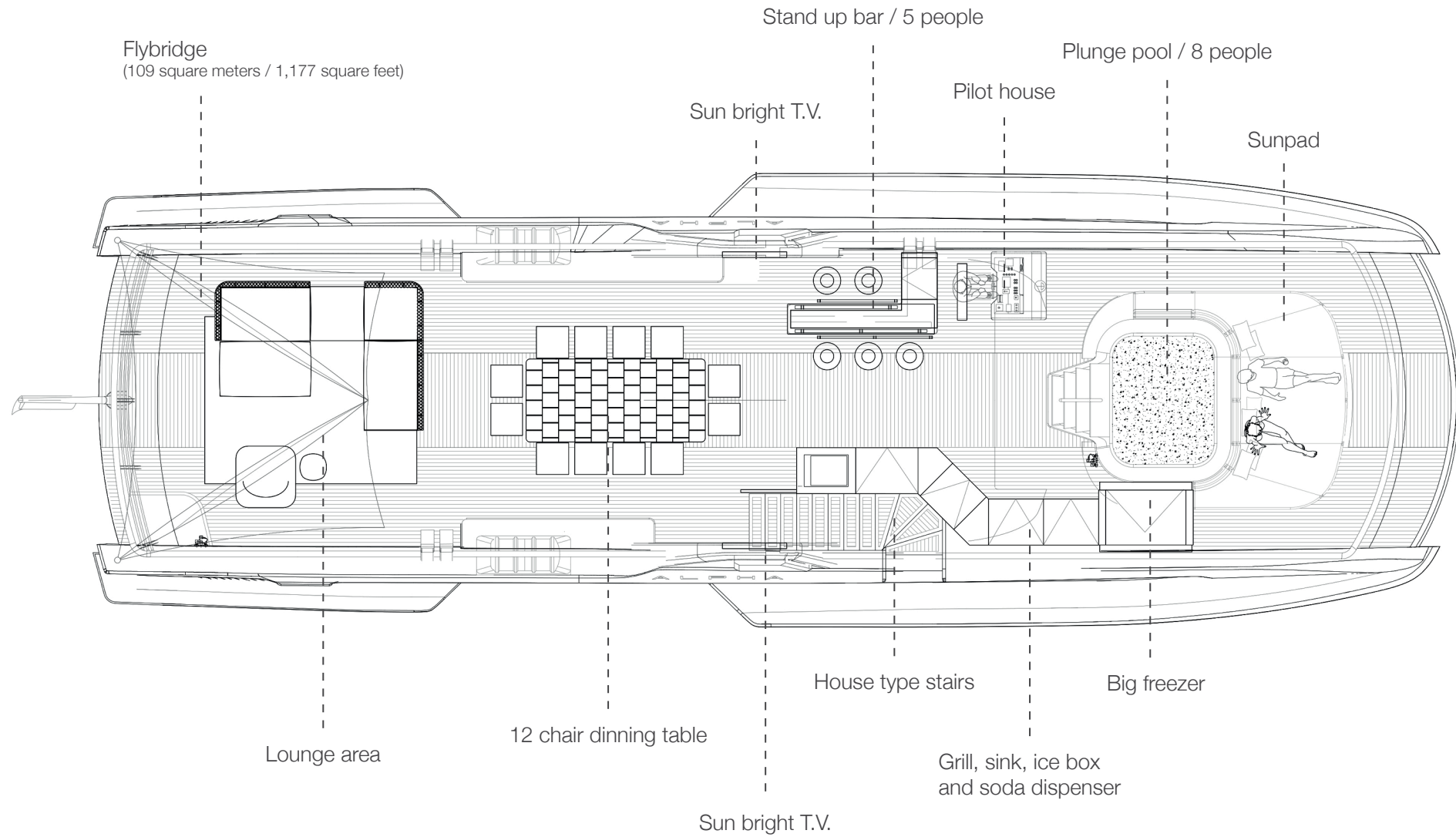


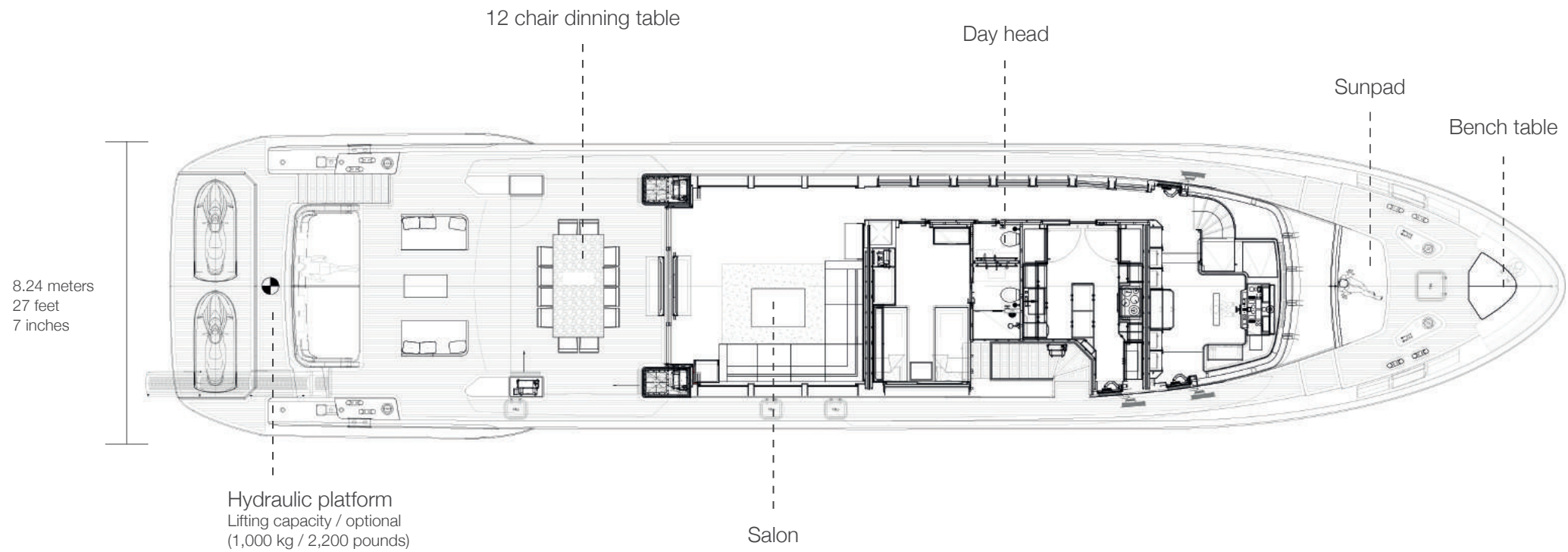






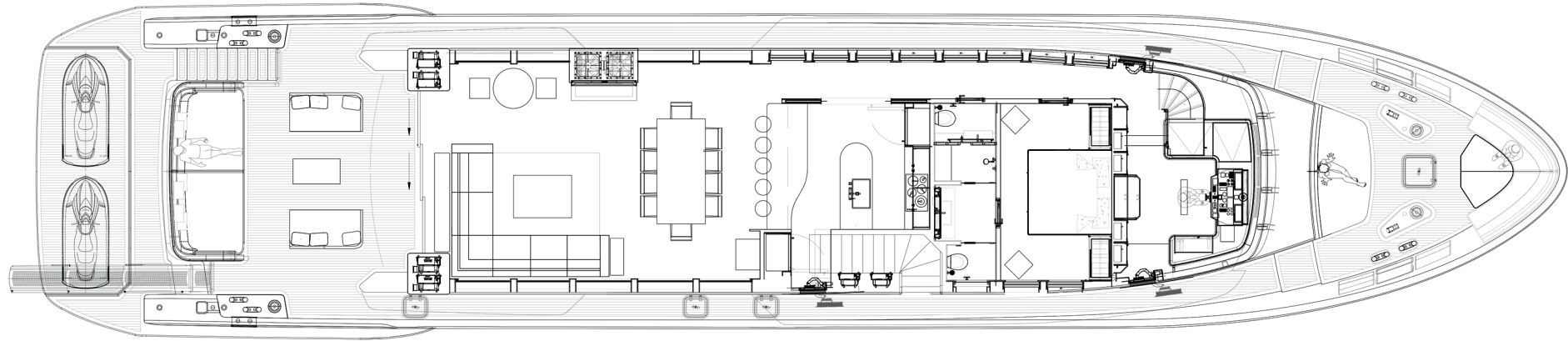


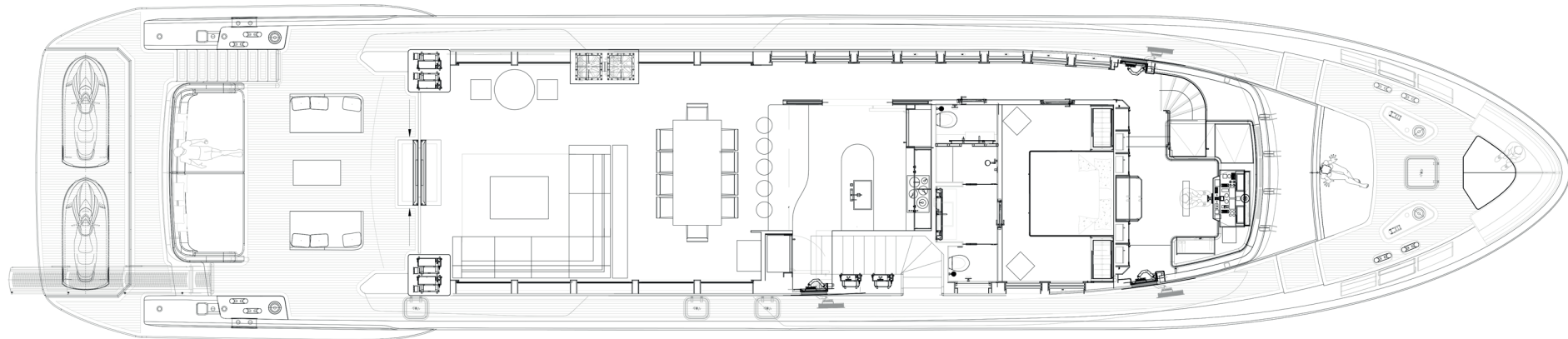


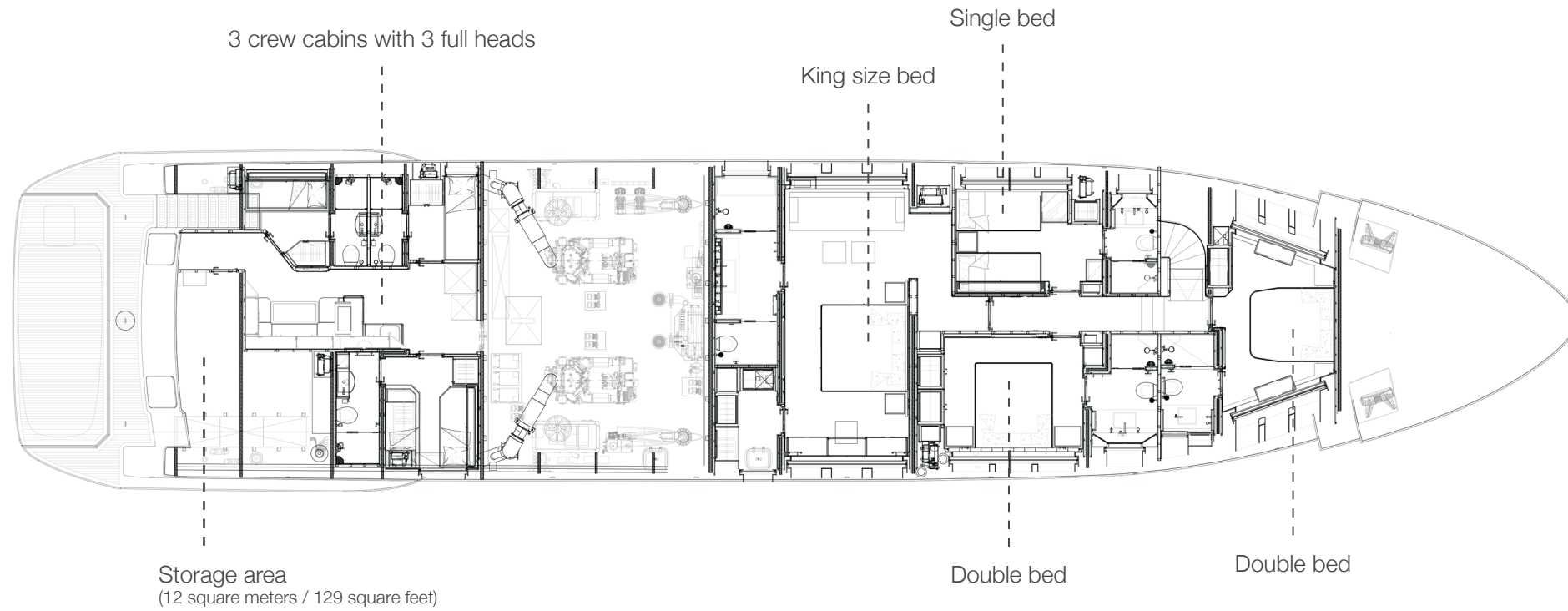


Highlights:

- Draft 1.95 meters / 6 feet
- Range at economical speed 3,000 nautical miles
- Maindeck ceiling height 2.25 meters







Lenght Overall:	38 m	125'
Length Waterline:	31.25 m	102' 6"
Max Beam:	8.4 m	27' 7"
Draft at Full Load:	1.95 m	6' 5"
Displacement at Full Load:	About 190 tons	418,878 lbs
Gross Tons:	About 270 GT	
Gross Tons with Enclosure:	About 300 GT	
Fuel:	30,000 liters approx	7,925 U.S. Gallons
Water:	5,000 liters approx	1,320 U.S. Gallons
Waste Water:	4,000 liters approx	1,056 U.S. Gallons
Owner & Guests Accommodation:	up to 12 people in 5 cabins	
Crew Accommodation:	up to 7 people in 3 cabins	
Exterior Design:	H2 Yacht Design	
Interior Design:	H2 Yacht Design	
Naval Architect:	Laurent Giles Naval Architects	
Engineering:	Shipyard / Laurent Giles Naval Architects	
Building Material:	Aluminum Hull and Aluminum Superstructure	

Range

Economical Speed (10 knots):	2,300 nautical miles
------------------------------	----------------------

Propulsion Details

Engine Options	Max Speed	Cruising Speed	Economical Speed
2x MAN V12 1,900 HP:	17.5 kn	16 kn	10 kn
2x MAN V12 1,650 HP:	15.5 kn	14 kn	10 kn

www.alphayachts.com

Miami, Florida
1441 Brickell Avenue, Suite 1400
33131, Miami Florida, Estados Unidos.

contact@alphayachts.com