

A L P H A
C U S T O M Y A C H T S

125

ALFRESCO

125
ALFRESCO



125
ALFRESCO





3. Cockpit



4. Cockpit



5. Salon



6. Kitchen



7. Bridge



8. Owner's cabin



9. VIP cabin



10. VIP cabin



11. Twin

125
ALFRESCO





13. Flybridge



14. Flybridge



15. Flybridge

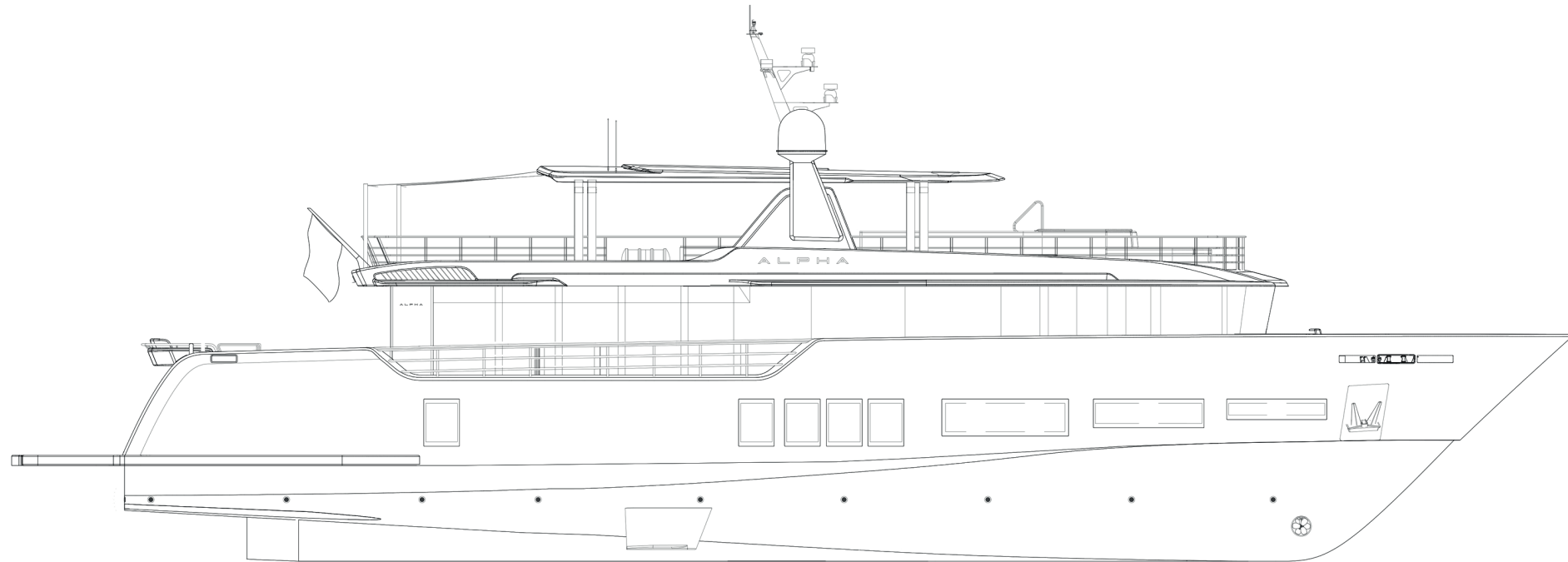


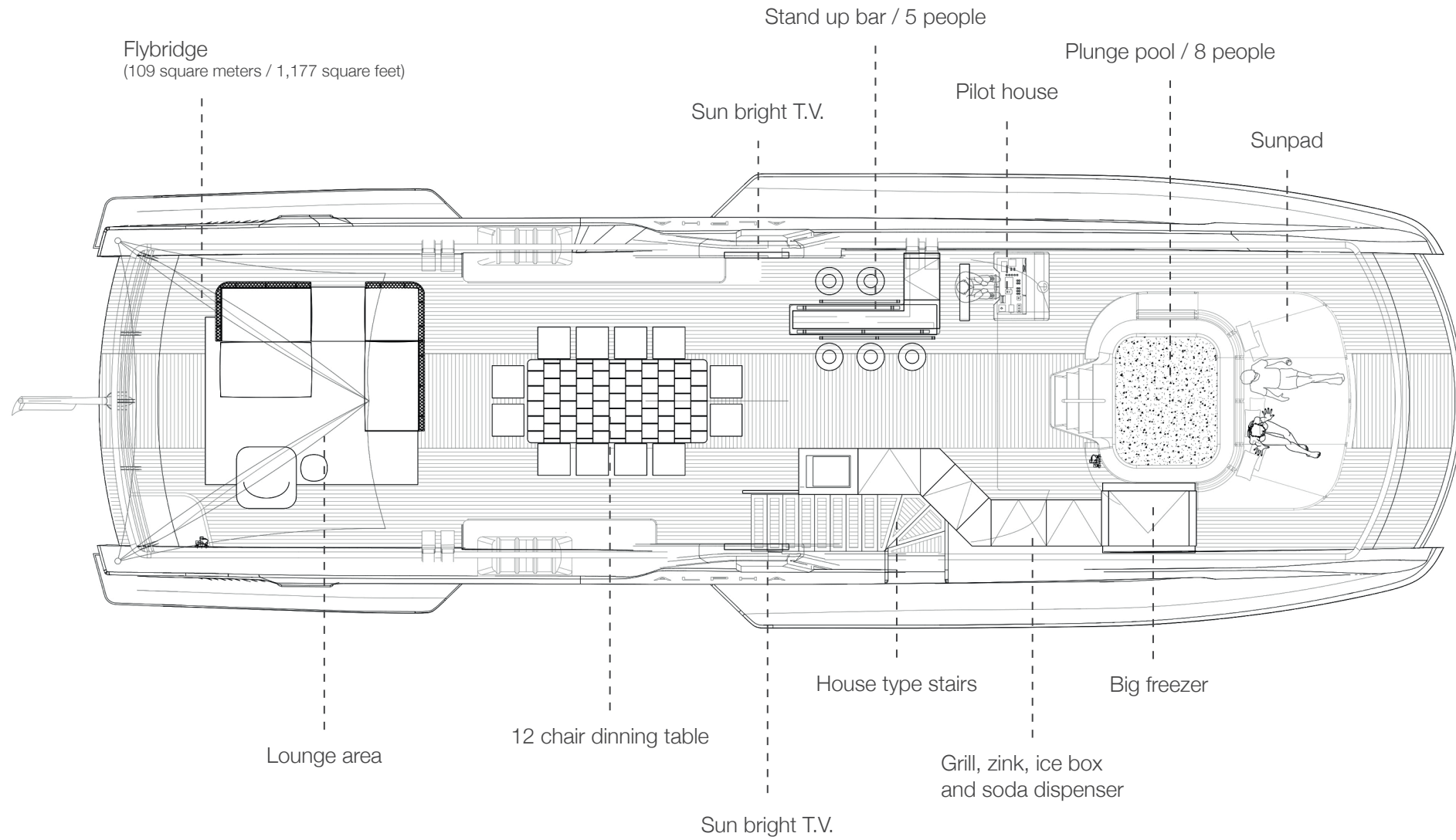
16. Plunge pool

125
ALFRESCO

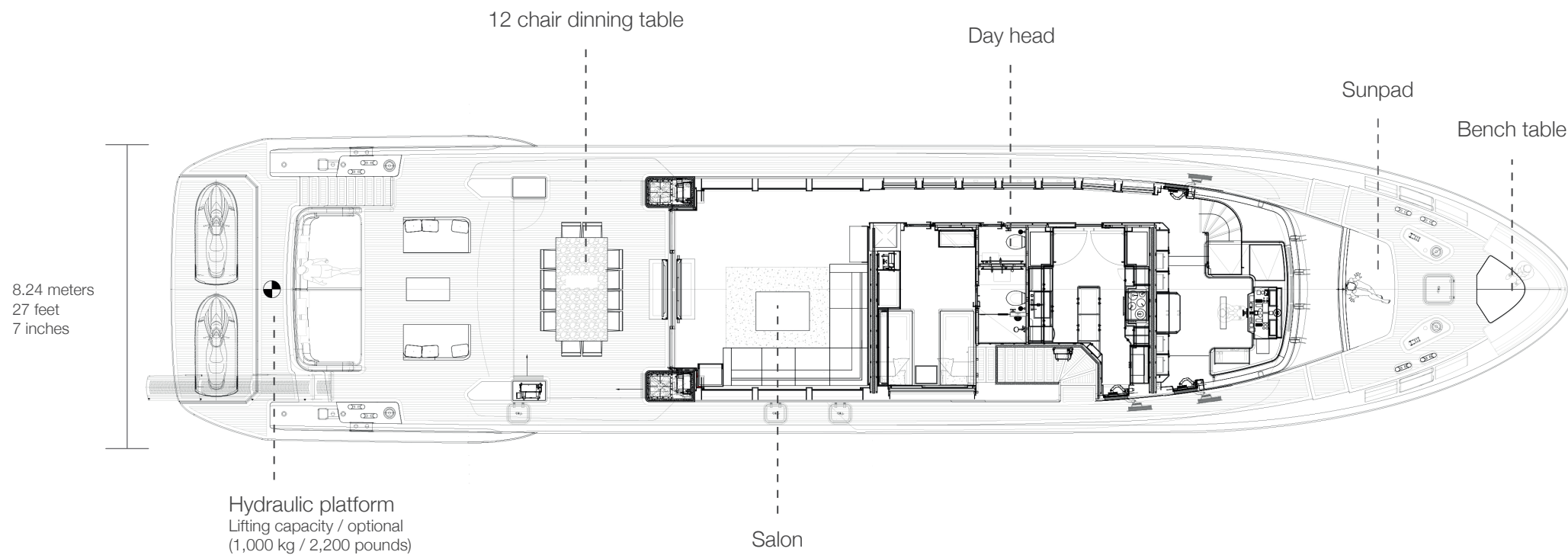


125
ALFRESCO



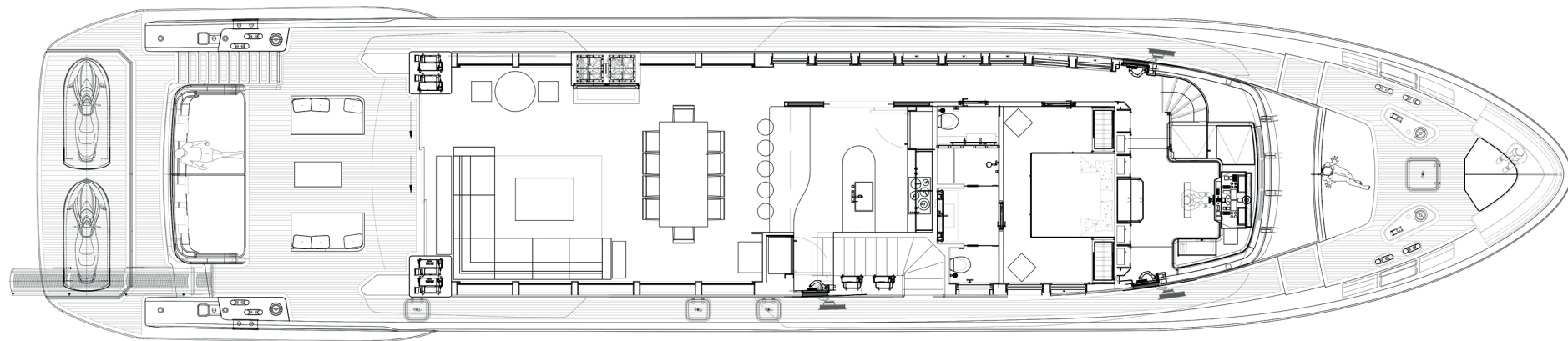


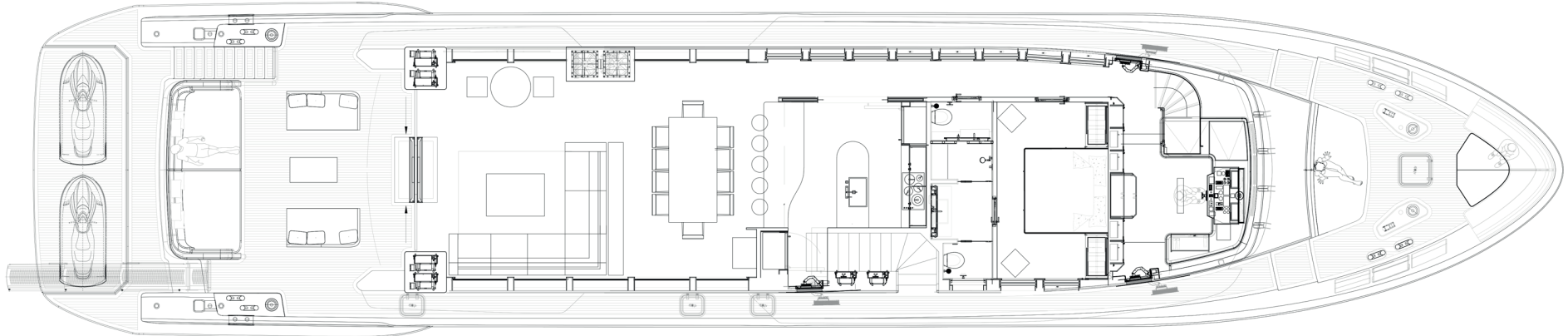
125 ALFRESCO



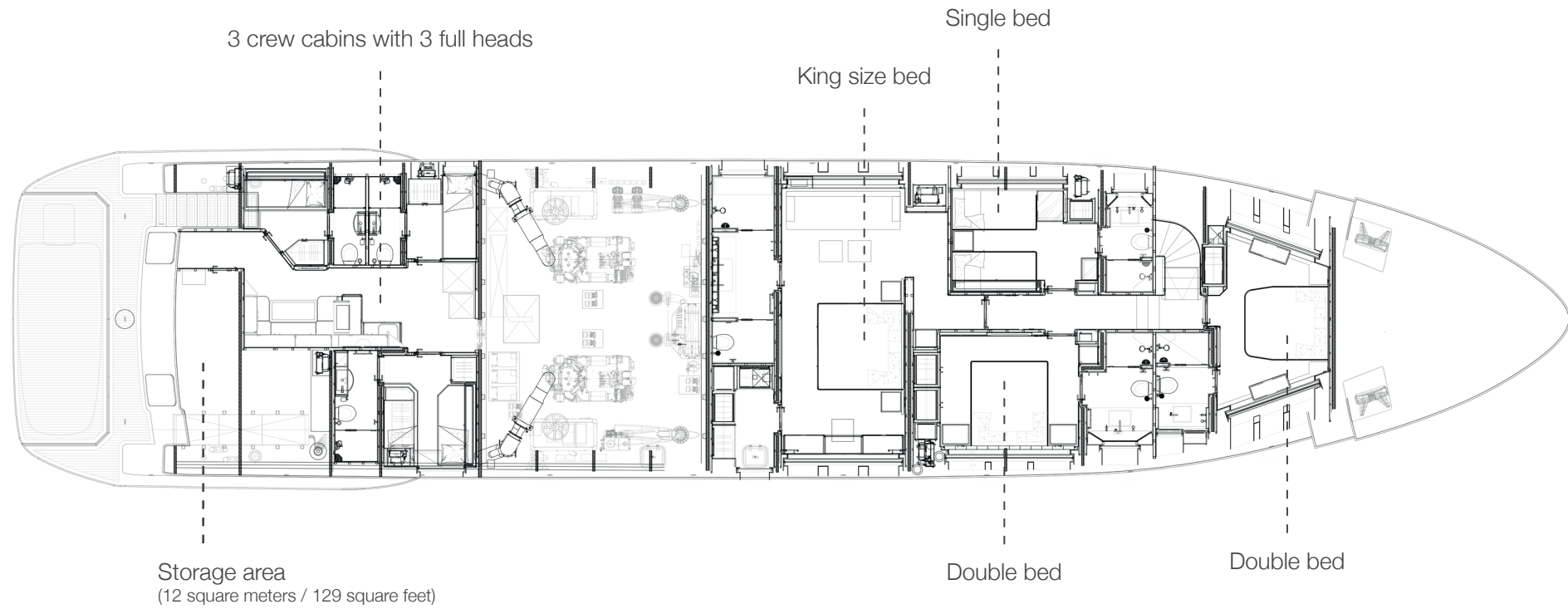
Highlights:

- Draft 1.95 meters / 6 feet
- Range at economical speed 3,000 nautical miles
- Maindeck ceiling height 2.25 meters





22. Open galley general arrangement



Lenght Overall:	125'	38 m
Length Waterline:	102' 6"	31.25 m
Max Beam:	27' 7"	8.4 m
Draft at Full Load:	6' 5"	1.95 m
Displacement at Full Load:	About 190 tons	418,878 lbs
Gross Tons:	About 270 GT	
Gross Tons with Enclosure:	About 300 GT	
Fuel:	7,925 U.S. Gallons	30,000 liters approx
Water:	1,320 U.S. Gallons	5,000 liters approx
Waste Water:	1,056 U.S. Gallons	4,000 liters approx
Owner & Guests Accommodation:	up to 12 people in 5 cabins	
Crew Accommodation:	up to 7 people in 3 cabins	
Exterior Design:	Giorgio M. Cassetta Design	
Interior Design:	Giorgio M. Cassetta Design	
Interior Decoration:	Paola Aboumrad	
Naval Architect:	Laurent Giles Naval Architects	
Engineering:	Shipyards / Laurent Giles Naval Architects	

Range

Economical Speed (10 knots):	2,300 nautical miles
------------------------------	----------------------

Propulsion Details

Engine Options	Max Speed	Cruising Speed	Economical Speed
2x CAT C32 Acert 1925:	17.5 kn	16 kn	10 kn
2x MAN V12 1,650 HP:	15.5 kn	14 kn	10 kn

www.alphayachts.com

Florida, Miami
1441 Brickell Avenue, Suite 1400
33131, Miami Florida, Estados Unidos.

contact@alphayachts.com